

Release Notes

Axiom Financial Institutions Suite
Version 2022.1

The Axiom logo consists of the word "AXIOM" in a bold, white, sans-serif font. It is enclosed within a rectangular frame that has a purple-to-blue gradient. The frame is composed of two horizontal lines and two vertical lines, with the top and bottom lines being slightly longer than the side lines.

AXIOM

10 S. Wacker Dr
Suite 3375
Chicago, IL 60606
(847) 441-0022
www.syntellis.com
info@syntellis.com

Syntellis® is a trademark of Syntellis Performance Solutions, LLC. Microsoft®, Excel®, and Windows® are trademarks of Microsoft Corporation in the United States and/or other countries. All other trademarks are the property of their respective owners.

This document is Syntellis Performance Solutions Confidential Information. This document may not be distributed, copied, photocopied, reproduced, translated, or reduced to any electronic medium or machine-readable format without the express written consent of Syntellis Performance Solutions.

Copyright © 2021 Syntellis Performance Solutions, LLC. All rights reserved.

Version: 2022.1

Updated: 6/6/2022

Contents

About the Release Notes	4
New features in 2022.1	4
Home page design and navigation	5
Payroll visualization	6
Fixed Assets visualization	8
Eliminations	9
Reclassifications	10
What to know before upgrading	12
Preparing and scheduling upgrades	13
Getting help and training	14
Technical considerations	16
Appendix: Version 2022.1 patches	16

About the Release Notes

Syntellis is pleased to announce the 2022.1 release of Axiom Financial Institutions Suite. Each product release provides new features, enhancements, and configuration options to meet your needs. Many of these features and enhancements are a direct result of your feedback and suggestions.

The purpose of these release notes is to provide you with the following:

- High-level descriptions of new features
- Information to know before upgrading
- Steps for preparing for and scheduling your upgrade
- List of fixed issues

TIP: Periodically, the release notes are updated when new information is available, including patch release fixes. To view the latest release notes, we encourage you to view them in the Axiom Financial Institutions Suite online help. On the help home page, simply click the Release Notes link at the top of the page.

New features in 2022.1

Syntellis Performance Solutions provides innovative enterprise performance management software, data and analytics solutions for financial institutions. Our powerful budgeting and planning, profitability, and analytics solutions help institutions elevate organizational performance and transform vision into reality.

With hundreds of leading banks, credit unions, and farm credit associations using our Axiom solutions to manage nearly \$1 trillion in assets combined with top satisfaction rankings from BPM Partners for the past eight years, our proven industry expertise helps financial institutions acquire insights, accelerate decisions, and advance their business plans.

[Home page design and navigation](#)

The home page has been redesigned, with a cleaner, easier-to-read interface, that features key performance indicators, a list of popular reports with their links, links to resources, and an announcement tile that you can use to create announcements for your financial institution.

[Payroll visualization](#)

The Payroll visualization uses business intelligence features to provide payroll information in a report where you can easily view data by many factors, including by department, account, employee name, plan code, and date. You can apply filters and slicers to each collection of data as well. All data can be exported.

[Fixed Assets visualization](#)

The Fixed Assets visualization uses business intelligence features to provide information about your organization's fixed assets in a report where you can easily view data by many factors, including by account, capital type, department, plan code, and date. You can apply filters and slicers to each collection of data as well. All data can be exported.

Elimination of duplicate entries in the GL

Eliminations can be used with holding companies, where duplicate transactions can appear multiple times, typically for the holding companies and one of the companies in that organization. Using eliminations, you can, for example, eliminate the transaction at the holding company level, thus assigning the transaction to the company where the transaction originated.

Reclassifications

A GL entry may need to be reclassified. Consider that your financial institution has created a project, using employees and other resources from one or more departments. You could reclassify transactions, such as an employee's salary, associated with the project as project-specific. This lets your view project expenses more easily and ensures that those transactions are not included in the GL for the normal business-as-usual work.

Home page design and navigation

► Why use this feature


With this release, Axiom Financial Institutions Suite has a new, clean look and feel. The new design brings visual consistency to the product and focuses on better display of data. The home page has been overhauled with performance indicators and tiles with links to features and reports. A new tile, Announcements, lets you create custom announcements.

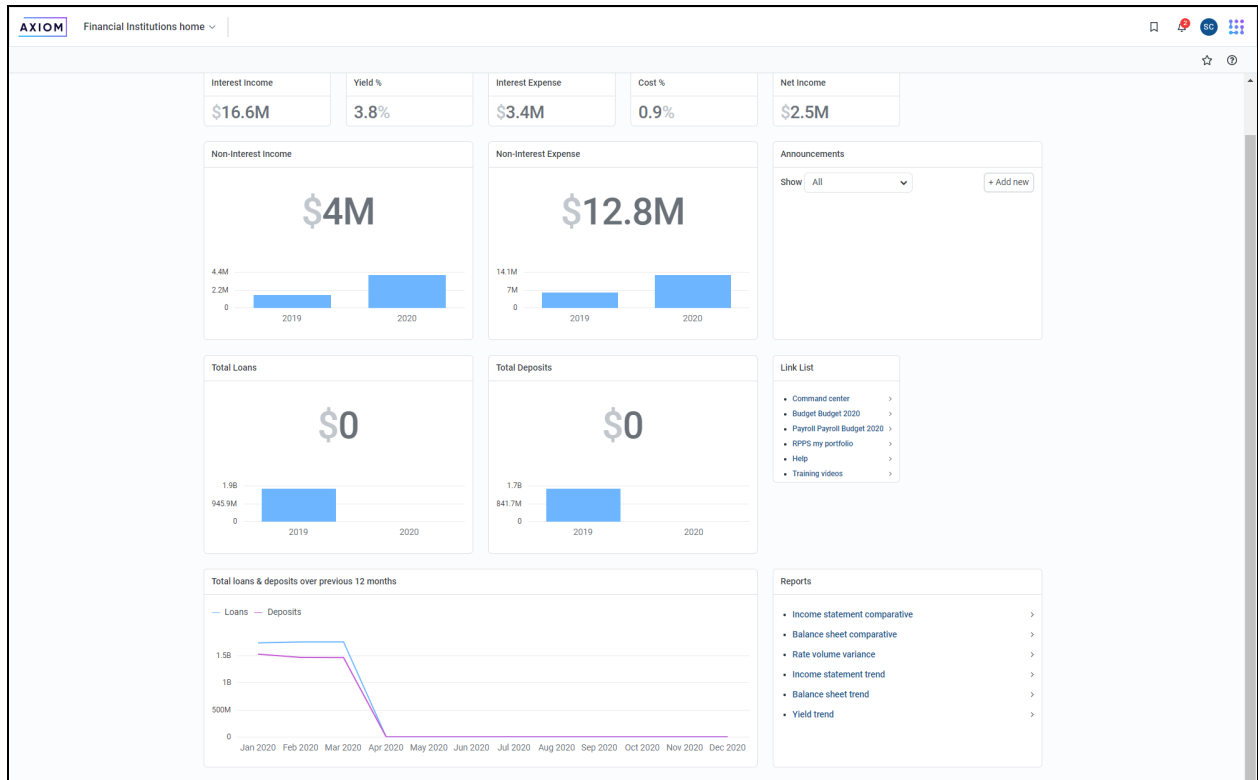
► How this feature works

What: Updated home page contains performance indicators, tiles with links to resources and reports, and your custom announcements.

Where: The update home page and navigation options show when you start Axiom.

Who: The design and navigation changes apply to all users of the Financial Institutions Suite.

How: View the home page when you start Axiom. Use the navigation menu to select the product or feature you want to work with. Use the  icon to select a product area or launch a desktop client or program.



► Where to find more information

"Working with Axiom Financial Institutions Suite"

"Navigation"

"Announcements"

Payroll visualization

► Why use this feature

Use the visualization report to view payroll information for your organization. With the built-in filters and slicers, you can view this data at any degree of complexity, from a high-level summary for the entire organization or use filters and slicers to drill down to views by department, individual employees, plan codes, accounts, or dates. You can use multiple filters to provide the exact data you need.

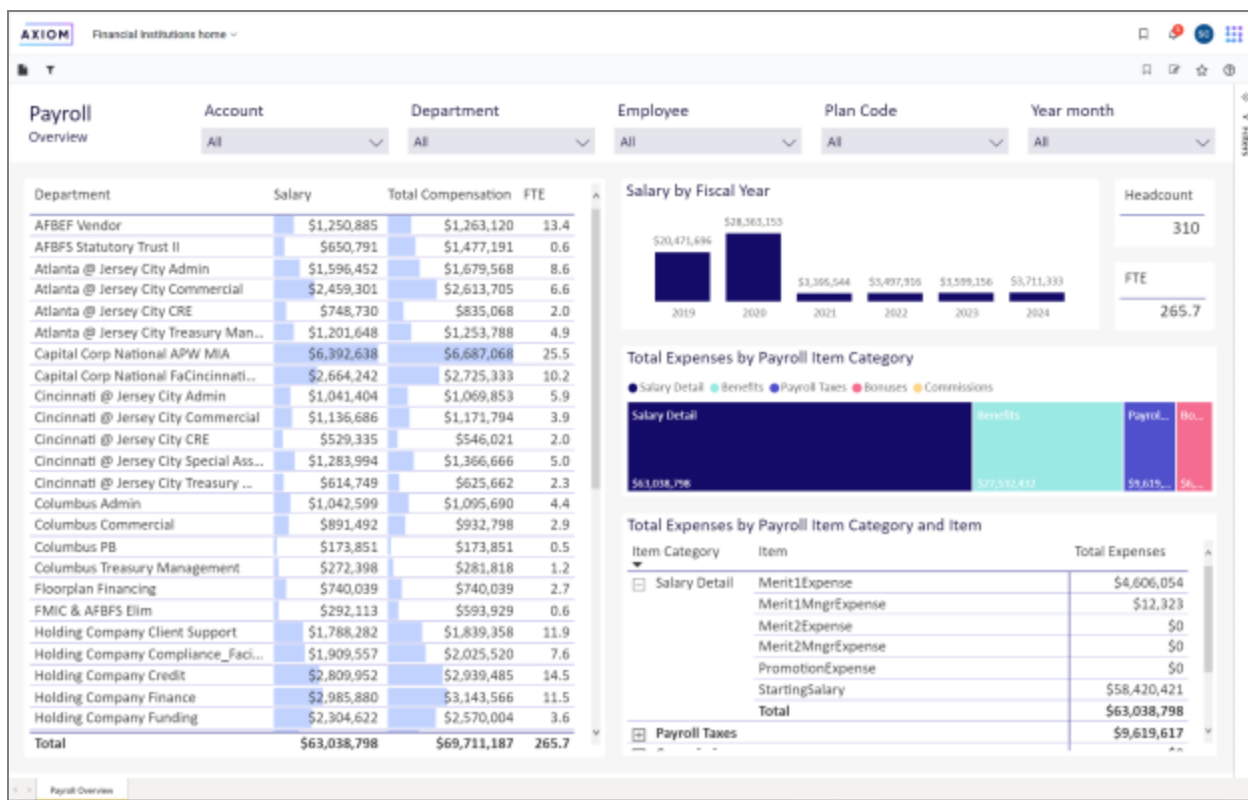
► How this feature works

What: The new Payroll visualization lets you examine all aspects of payroll data for your organization, with built-in filters and slicers to let you work with the exact data you need.

Where: Navigate to the Intelligence Center, then click to open the Data Visualizations and Analytics folder. Select Payroll to open the report.

Who: To view Axiom visualizations, all users must be added using the Dashboard Data Security Utility. See "Setting user permissions for dashboards" [Setting user permissions for dashboards](#) for information about this task.

How: Before you run the Payroll visual the first time, you must run the "Refresh Semantic Domains job." This job ensures that all applicable payroll data is included in the dashboard.



► Where to find more information

"Payroll dashboard"

"Setting user permissions for dashboards"

"Refresh Semantic Domains job"

Fixed Assets visualization

► Why use this feature

Use the Fixed Assets visualization to examine the fixed assets for your organization. With the built-in filters and slicers, you can view this data at any degree of complexity, from a high-level summary for the entire organization or use filters and slicers to drill down to views by account, capital type, department, plan code, and date. You can use multiple filters to provide the exact data you need.

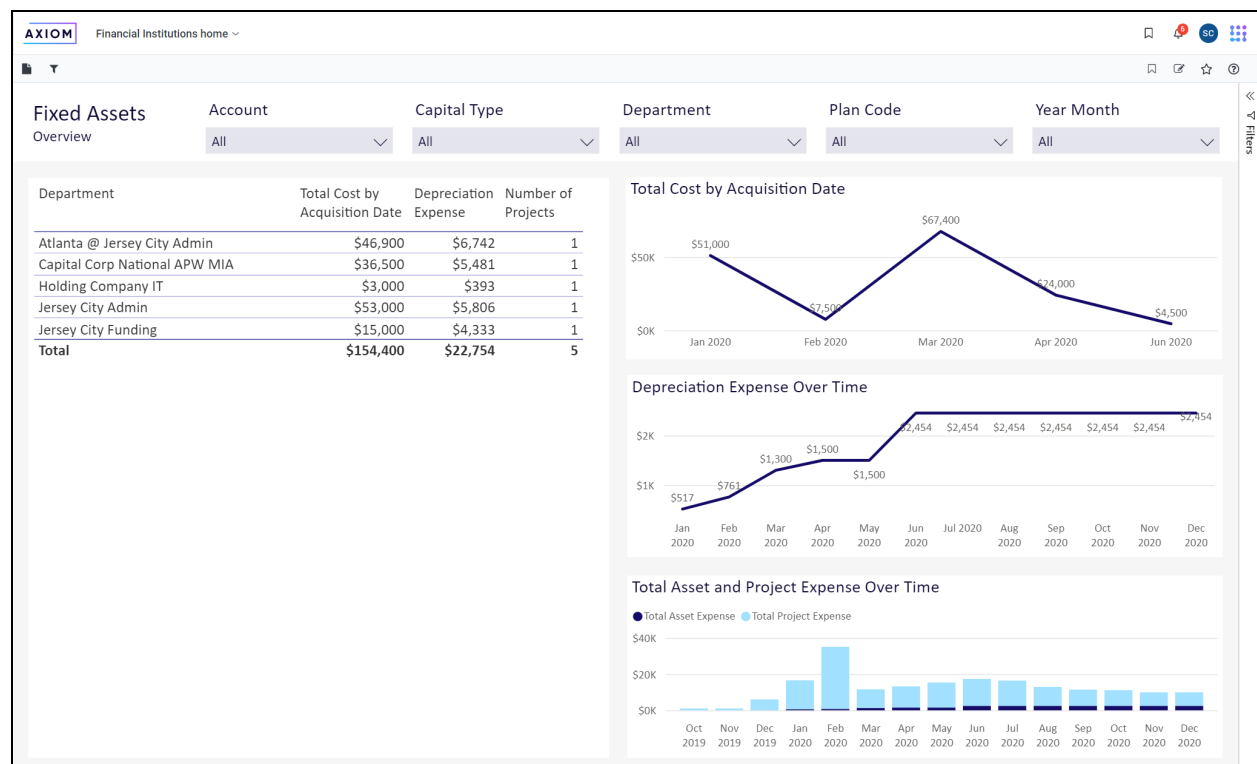
► How this feature works

What: The Fixed Asset visualization lets you examine all aspects of your organization's fixed assets, with built-in filters and slicers to let you work with the exact data you need.

Where: Navigate to the Intelligence Center, then click to open the Data Visualizations and Analytics folder. Select **Fixed Assets** to open the visualization.

Who: To view Axiom Intelligence visualizations, all users must be added using the Dashboard Data Security Utility. See "Setting user permissions for dashboards" for information about this task.

How: Before you run the Payroll dashboard the first time, you must run the "Refresh Semantic Domains job." This job ensures that all applicable fixed assets data is included in the visualization.



► Where to find more information

[Fixed Assets visualization](#)

"Fixed assets visualization"

"Setting user permissions for visualizations"

"Refresh Semantic Domains job"

Eliminations

► Why use this feature

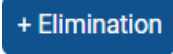
Organizations that are part of a holding company can have duplicate transactions in the GL; a transaction associated with one of the organizations may also be associated with the holding company. With the Eliminations feature, you can eliminate the duplicate transaction in the GL.

► How this feature works

What: Use the Eliminations utility to define the transaction and the organizations that have that transaction in the GL, then run the Elimination rule you created to remove the duplicate from the appropriate organization.

Where: From the Command Center, select Financial Reporting. Click the Manage Data tab and then click the Eliminations sub tab.

Who: Users must be granted Financial Reporting Admin permissions to use this feature.

How: Click the  button to open the Eliminations form, where you can identify and execute an elimination.

Add elimination

* Indicates required field

Description *

Type *

Select Type

Party company entries

Company *

Select

Account *

Select

Department filter *

Select

Counter party company entries

Leave blank if a single entry

Company

Select

Account

Select

Cancel

Add

- Where to find more information
"Eliminations"

Reclassifications

- Why use this feature

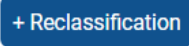
Use this feature to reclassify a transaction in the GL. The amount will remain constant, but the transaction will be reclassified.

► How this feature works

What: You can reclassify transactions to represent another category in the GL than the original category, providing more accurate records for your data.

Where: From the Command Center, select Financial Reporting. Click the Manage Data tab and then click the Reclassifications sub tab.

Who: Users must be granted Financial Reporting Admin permissions to use this feature.

How: Click the  button to open the Reclassification form, where you can identify and execute a reclassification.

Add reclassification

Description

Rule period

Starts

Expires(Optional)

Frequency

From Account

Department grouping

Department selection

Amount type

To

Use source account(s)?

Account

Use source department(s)?

Department

Save + Close

Save + Continue

► Where to find more information

"Reclassification of entries in the GL"

What to know before upgrading

IMPORTANT: You must apply the Platform 2022.1 upgrade before applying any 2022.1 Axiom product upgrades. Axiom upgrades are backwards compatible to 2020.1 Axiom Planning and Profitability Suite so you can upgrade different products at different times, but you must upgrade to Axiom 2022.1 before the first product upgrade. Refer to the **Axiom 2022.1 Release Notes** for considerations before upgrading.

When upgrading to the 2021.3 version of Axiom Financial Institutions Suite, keep in mind the following:

- Syntellis-delivered reports may be replaced. Any report that you saved under a different name or created new will remain untouched. Replaced reports are available in Document History, if needed.
- Any Syntellis delivered report that was moved to a new location will automatically move back to its original location.
- Syntellis product templates and calculation method libraries will be replaced.
- Syntellis product task panes will be replaced.
- Syntellis process definitions will not be replaced.
- Driver files will be replaced.
- Security roles and sub-systems will be reset to their configured settings. All user security exceptions you may have made will remain intact.
- Specific items configured as part of your company or organization's implementation such as imports, exports, driver files, and process management files, will remain as is. Any required modifications to these areas are covered in the release notes, if required.

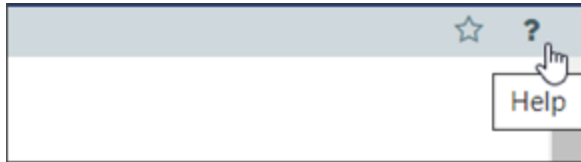
Preparing and scheduling upgrades

Summary of the upgrade process:

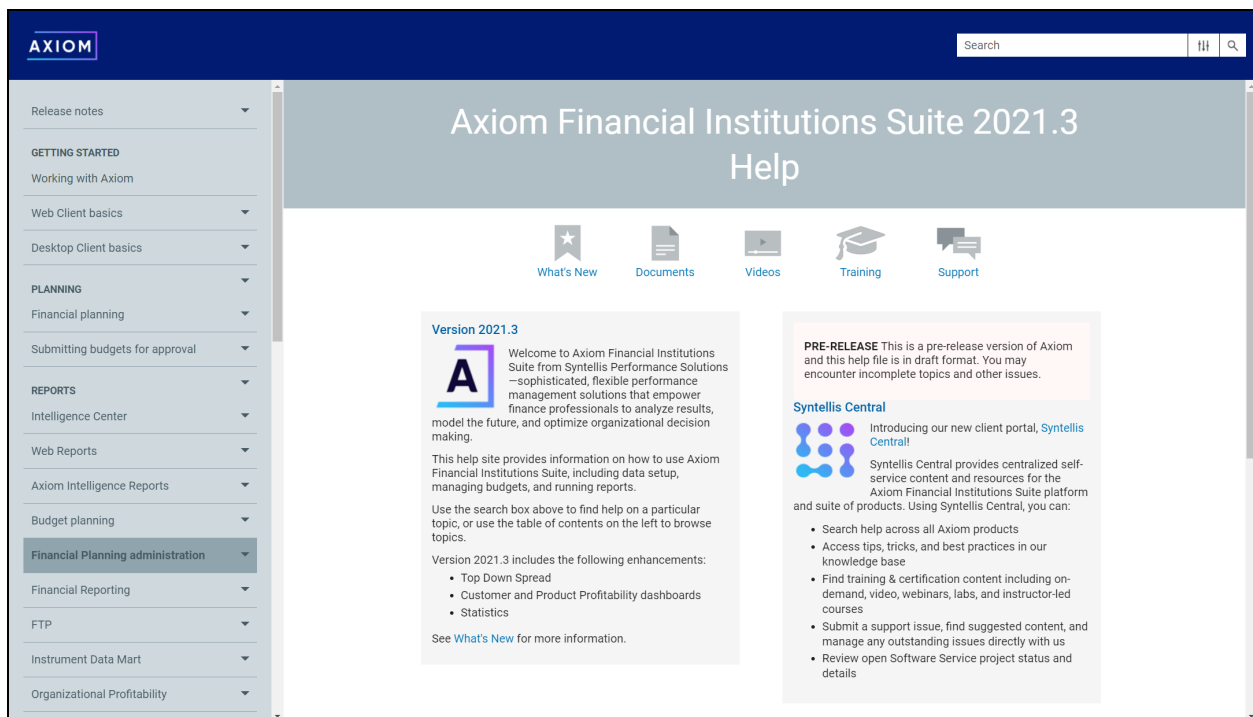
1. **Review product release notes** – Review this document to familiarize yourself with the new features and functionality.
2. **Schedule an installation date** – Submit a request to your organization's Axiom System Administrator to contact support by creating a support ticket to schedule an installation date and time with at least three days of advance notice. The request should include the following information:
 - Desired Axiom platform version.
 - Desired Axiom Financial Institutions Suite product and version.
 - Indicate whether to first refresh the Axiom test sandbox with a copy of the production instance of Axiom and apply update(s) to it. If so, provide the soonest that Syntellis can do this.
 - Propose an approximate two-hour downtime window when Syntellis can apply update(s) to the production instance of Axiom during regular business hours, Monday through Friday 7 AM to 7 PM Central (except holidays recognized by Syntellis).
3. **Complete manual configuration updates** – After installing the upgrade, review any manual setup steps needed to enable features for this version.

Getting help and training

Syntellis provides world-class resources at your fingertips directly within the Axiom system. Axiom Help provides topics, knowledge base articles, documents, webinar/training announcements, and videos to guide you through managing your system. To access these resources, click the **Help** icon in the main toolbar:



This opens the Axiom Financial Institutions help site, which in addition to the aforementioned resources, also provides search and filter functions that make it easy to find information about specific topics.



► Syntellis Central

Syntellis Central provides centralized self-service content and resources for the Axiom Financial Institutions Suite platform and suite of products. Using Syntellis Central, you can:

- Search help across all Axiom products
- Access tips, tricks, and best practices in our knowledge base
- Find training & certification content including on-demand, video, webinars, labs, and instructor-led courses

- Submit a support issue, find suggested content, and manage any outstanding issues directly with us
- Review open Software Service project status and details

Technical considerations

Please consider the following when upgrading to the latest version of Axiom Financial Institutions Suite:

- All fields in standard tables are locked down.
- If you are on any product release prior to 2020.4, please contact Tom Barnowski to discuss migration to the next generation of Axiom Planning and Profitability.

Appendix: Version 2022.1 patches

This section details the fixes and enhancements in patch releases for Axiom Financial Institutions Suite version 2022.1. For assistance with any patch, please contact us by logging into Axiom Financial Institutions Suite, then open Help and click Support.

Axiom patches are cumulative. All fixes and enhancements included in prior patches are included in the current patch.

Current patch: 2022.1.

The following issues were fixed in this patch:

- 140581: [Fiserv] Can't access the GL imports. Prepaid error blocks ability to copy GL actuals into budget.
- 142636: [Fiserv] Budget-> Load Data - Remote data error blocks ability to copy GL actuals into budget.
- 140084/142529: [CAP] Toggling the active slider clears out the mapping page.
- 138888: Command Center - Elimination settings page - DEPT Filter does not have a no filter option.
- 140035: Financial Reporting - Income statement Comparative report - formula error on open - Related Issues with all standard reports.
- 122849/142545: [BUD] [PS] Case Number 00451165 - FI Suite D.effect - Fixed asset driver errors populating asset types, presents wrong list of asset types in plan files.
- 132868/142548: NextGen - FI Suite Defect: Existing Fixed Asset Utility generates query error when used with forecasts - invalid field definition column.
- 142798: Command Center/Financial Reporting/Manage Data/Eliminations/Edit mode: Department filter field should be optional.
- 141351: Standard Ratio Rules - Missing a comma in the tax ratio calculation.
- 142872: Fin Repo/Reclassifications: when Save+Continue button is clicked and the modal is closed then an empty row is added to the Reclassifications table.